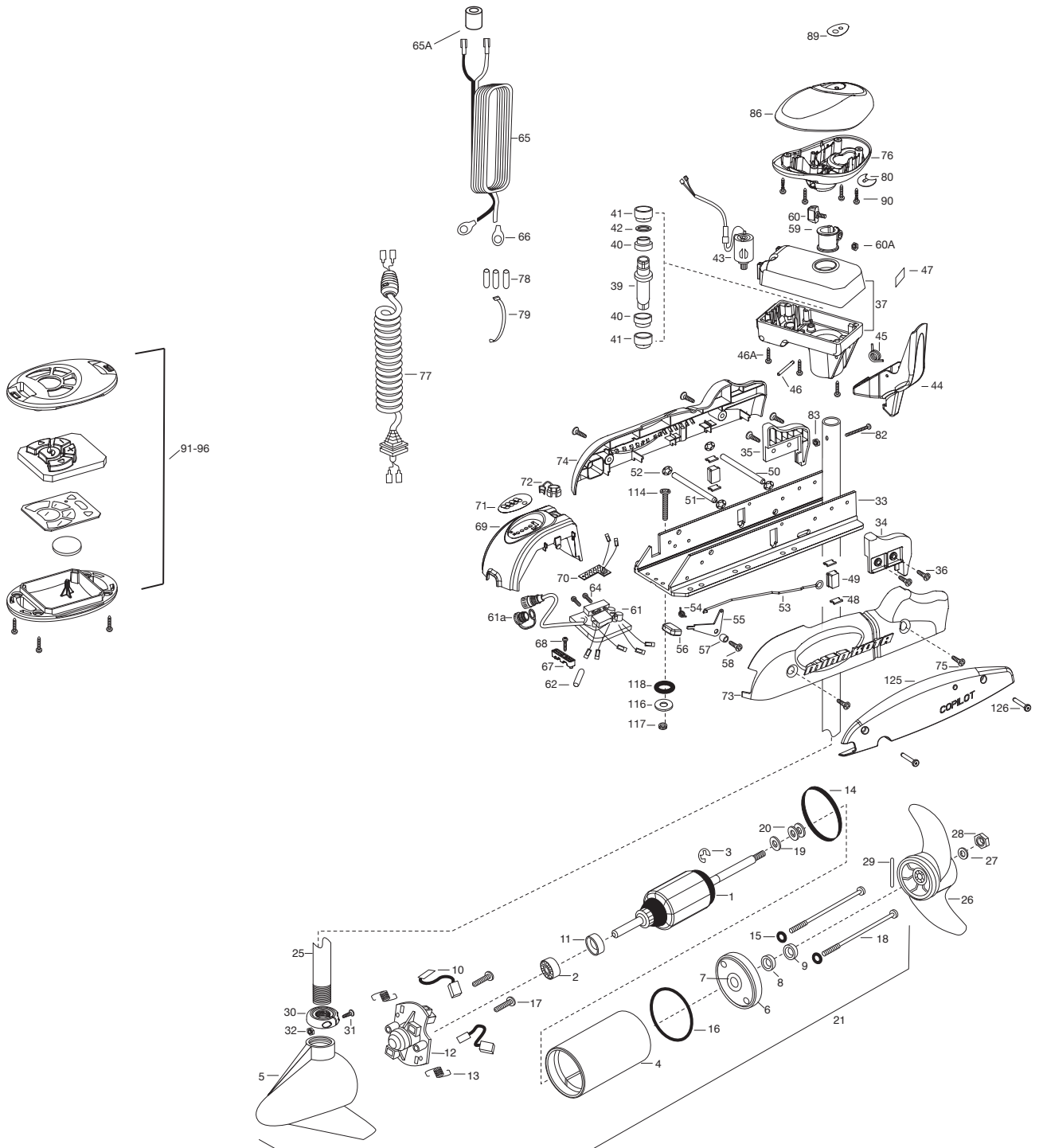


PARTS DIAGRAM

for use with "Q" serial numbers 2-year warranty

RIPTIDE SP 55

55 LBS THRUST - 12 VOLT - 50 AMPS - 48"/54" SHAFT



PARTS LIST

RIPTIDE SP 55

55 LBS THRUST - 12 VOLT - 48"/54" SHAFT

ITEM	QTY	PART NUMBER	DESCRIPTION
1	1	2-100-121	ARMATURE ASSY 24V
2	1	140-010	BALL BEARING
3	1	788-015	RETAINING RING
4	1	2-200-301	HOUSING ASSY CENTER
5	1	421-336	HOUSING -BRUSH END
6	1	2-400-337	PLAIN END HOUSING ASSEMBLY 3.625
7	1	144-049	BEARING - FLANGE (SERVICE ONLY)
8	1	880-003	SEAL
9	1	880-006	SEAL WITH SHIELD
10	2	188-036	BRUSH ASSEMBLY
11	1	725-050	BRUSH RETENTION- PAPER TUBE
12	1	738-036	BRUSH PLATE W/HOLDER
13	2	975-040	SPRING - TORSION
14	1	337-036	GASKET
15	2	701-008	O-RING, THRU-BOLT
16	1	701-081	O-RING
17	2	830-007	SCREW-8-32
18	2	830-042	THRU-BOLT 10-32X8.83
19	1	990-067	WASHER- STEEL THRUST
20	2	990-070	WASHER - NYLATRON
21	1	2097095	MOTOR ASSY 24V
25	1	2002000	TUBE-48" WHITE
	1	2002001	TUBE-54" WHITE
■	1	1378131	PROPELLER KIT
26	1	2091160	PROPELLER W/WEDGE 2
27	1	2151726	WASHER-5/16 SS
28	1	2198400	ZINC ANODE
29	1	2092600	PIN-DRIVE
30	1	2301545	COLLAR- LATCH PD/AP
31	1	2303434	SCREW- 8-32X5/8 MACH
32	1	2303112	NUT 8-32 NYLOC SS
33	1	2301937	EXTRUSION- BASE MACH
34	1	2303932	MOTOR REST- RIGHT 3-5/8
35	1	2303937	MOTOR REST- LEFT 3-5/8
36	4	2332104	SCREW 1/4-20X5/8
37	1	2771827	DRIVE HOUSING / LATCH HANDLE ASSY WHITE
■	1	2882011	BUSHING/ OUTSHAFT KIT (INCLUDES 39-42)
*39	1	2302010	DRIVE HSG OUTPUT SHFT
*40	2	2307304	BUSHING- INNER
*41	2	2307305	BUSHING- OUTER
*42	1	2304603	O-RING
43	1	2307050	MOTOR- DRIVE HOUSING
44	1	2307201	LATCH HANDLE PD/AP
45	1	2302750	SPRING- LATCH TORSION
46	1	2302628	PIN- ROLL
46A	6	2303408	SCREW - DRIVE HOUSING
47	1	2305564	DECAL-STOW/DEPLOY
48	4	2335110	PAD-PIVOT SUPT
49	2	2305103	PIVOT PAD- NEW MTR'L
50	1	2330510	PIN-LATCH
51	1	2330520	PIN-PIVOT
52	4	2013100	NUT-SPEED
53	1	2303612	ROD-RELEASE RT/AP S
54	1	2322700	SPRING-RELEASE LEVER
55	1	2333705	LEVER-RELEASE
56	1	2300101	RELEASE-KNOB
57	1	2301700	SPACER-RELEASE LEVER
58	1	2332104	SCREW-1/4-20 X 5/8
59	1	2031522	COLLAR- DRIVE (W/INSERT)
60	1	2011366	SCREW-COLLAR/NEW KNOB
60A	1	2323104	NUT

ITEM	QTY	PART NUMBER	DESCRIPTION
61	1	2304064	CONTROL BOARD ASSEMBLY- 12V
61A	1	2320208	DUST COVER
62	1	2355410	SHRINK TUBE-3/8 ODX2
64	3	2303434	SCREW-8-32 X 5/8
65	1	2090651	LEADWIRE LOGA 44"
65A	1	2307310	BEAD - FERRITE (CE MODELS ONLY)
66	2	2020700	TERMINAL RING
67	1	2321310	STRAIN RELIEF- BRACKET PD/AP
68	1	2323405	SCREW-1/4-20 X 5/8 AP
69	1	2306556	HOUSING- CENTER WHITE
70	1	2074080	BATTERY GAUGE - 24V
71	1	2316606	DECAL, BATTERY GAUGE
72	1	2302935	STRAIN RELIEF-DR. HSG
73	1	2303944	SIDEPLATE (RIGHT) WHITE
74	1	2303949	SIDEPLATE (LEFT) WHITE
75	4	2332104	SCREW-1/4-20 X 5/8
76	1	2302516	CONTROL BOX PD/AP
77	1	2991280	COIL CORD W/STRAIN RELIEF PD
78	3	2065400	WIRE INSULATOR-LGE 1-3/4
79	1	2256300	TIE WRAP-5" BLACK
80	1	2224703	INSERT- PLUG
82	1	2332102	SCREW-10-24 X 1-3/4 PPH Z/P
83	1	2013101	NUT-HEX 10-24 NYLOC
86	1	2300243	CONTROL BOX COVER- RIPTIDE WHITE
89	1	2315689	DECAL- COVER 55PD
90	4	2012100	SCREW-8-18 X 5/8
■	1	2994020	COPILOT TRANSMITTER
91	1		TRANSMITTER CASE CVR
92	1		KEYPAD
93	1		CIRCUIT BOARD, TRANS
94	1		BATTERY, COIN
95	1		TRANSMITTER CASE BTM
96	4		SCREW, TRANSMITTER
■	1	2994089	RECEIVER ASSEMBLY V2, COPILOT
100	1	2372511	CASE, RECEIVER WHT
101	2	2373442	SCREW 1/4-20 X 1.75 SS
102	2	2373450	SCREW #8 X 3/8
103	2	2371727	WASHER
104	1	2373418	SCREW #8 X 5/8 SS
105	1	2374089	CIRCUIT BRD V2, RCVR PD
■	1	2994864	BAG ASSEMBLY- (BOLT,NUT,WASHERS)
*114	6	2263462	BOLT-MOUNTING-1/4X2
*116	6	2261713	WASHER-1/4
*117	6	2263103	NUT NYLOK 1/4-20 MTG
*118	6	2301720	WASHER-MOUNTING RUBBER
■	1	2888460	SEAL & ORING KIT
125	1	2774089	COPILOT SIDEPLATE
126	2	2373442	SCREW - 1/4-20 X 1.75 PPH MACH

■ THIS ITEM IS PART OF AN ASSEMBLY.

*THIS ITEM IS PART OF A KIT AND ONLY LISTED FOR VIEWING PURPOSES.

MOTOR WIRING DIAGRAM

NOTE: This is a universal, multi-voltage diagram. Double check your motor's voltage for proper connections. Over-Current Protection Devices not shown in this illustration.

Riptide PowerDrive 55 is 12-volts only!

